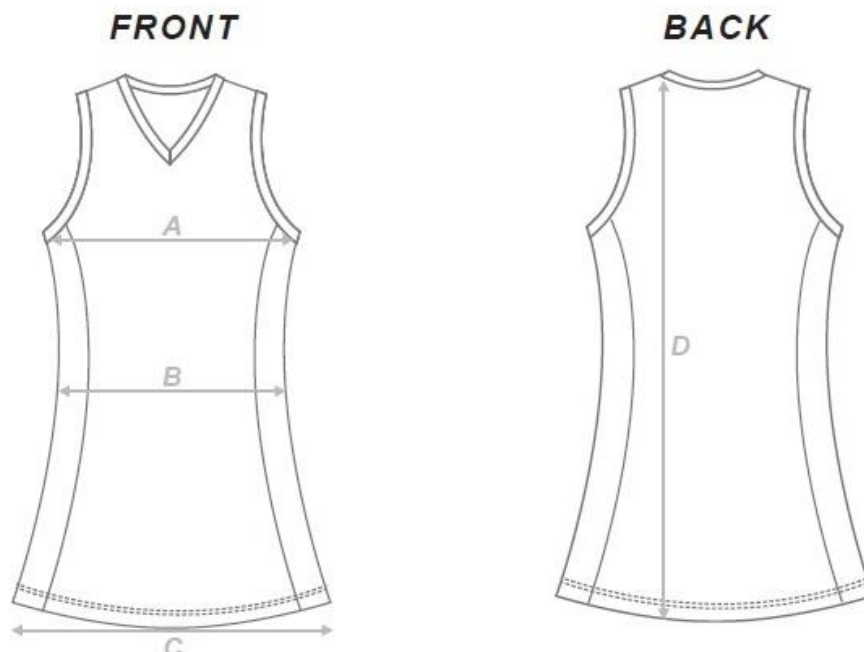


# Playing Dress / TNL Playing Dress

- Size chart for standard length
- Available in +5cm and +10cm lengths
- Optional Name for ***TNL Teams Only*** (No Charge)

KIDS SIZING	STANDARD FIT - CM		SIZE	4	6	8	10	12	14
	1/2 CHEST CIRCUMFERENCE	<b>A</b>	29.5	31.5	33.5	35.5	37.5	39.5	
	1/2 WAIST CIRCUMFERENCE	<b>B</b>	47.5	49.5	51.5	53.5	55.5	57.5	
	1/2 HEM CIRCUMFERENCE	<b>C</b>	29	31	33	35	37	39	
	BACK LENGTH	<b>D</b>	51.5	37.5	63.5	69.5	74.5	77.5	

ADULT SIZING	STANDARD FIT - CM		SIZE	8	10	12	14	16	18	20	22	24
	1/2 CHEST CIRCUMFERENCE	<b>A</b>	41	43.5	46	48.5	51	53.5	56	58.5	61	
	1/2 WAIST CIRCUMFERENCE	<b>B</b>	40.5	43	45.5	48	50.5	53	55.5	58	60.5	
	1/2 HEM CIRCUMFERENCE	<b>C</b>	59	61.5	64	66.5	69	71.5	74	76.5	79	
	BACK LENGTH	<b>D</b>	80.5	82.5	84.5	86.5	88.5	90.5	92.5	94.5	96.5	



# Playing Polo (MEN'S)

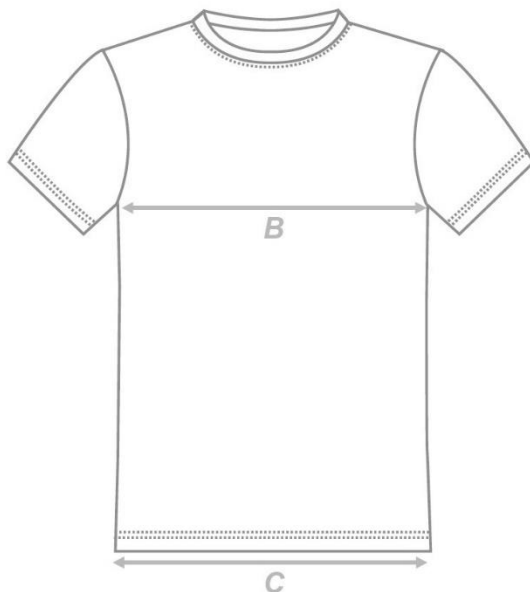
## KIDS SIZING

STANDARD FIT - CM	SIZE	4	6	8	10	12	14
BACK LENGTH	<b>A</b>	45	47	51	55	59	63
1/2 CHEST CIRCUMFERENCE	<b>B</b>	36	38	40	42	44	47
1/2 HEM CIRCUMFERENCE	<b>C</b>	36	38	40	42	44	47

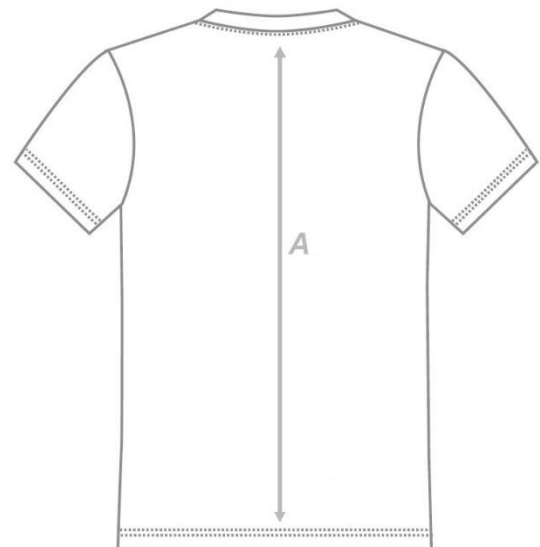
## ADULT SIZING

STANDARD FIT - CM	SIZE	XS	S	M	L	XL	2XL	3XL	4XL	5XL
BACK LENGTH	<b>A</b>	70.5	72	73.5	75	76.5	78	79.5	81	82.5
1/2 CHEST CIRCUMFERENCE	<b>B</b>	50	52.5	55	57.5	60	62.5	65	67.5	70
1/2 HEM CIRCUMFERENCE	<b>C</b>	50	52.5	55	57.5	60	62.5	65	67.5	70

### FRONT



### BACK



## Shorts (MEN'S)

	4K	6K	8K	10K	12K	14K
1/2 Waist Relaxed	26.5	27.5	28.5	29.5	30.5	31.5
1/2 Waist stretched	34	36	38	40	42	44
Length	27	29.5	32	34.5	37	39

	XS	S	M	L	XL	2XL	3XL	4XL	5XL
1/2 Waist Relaxed	33	35.5	38	40.5	43	45.5	48	50.5	53
1/2 Waist stretched	46	48.5	51	53.5	56	58.5	61	63.5	66
Length	40	41	42	43	44	45	46	47	48



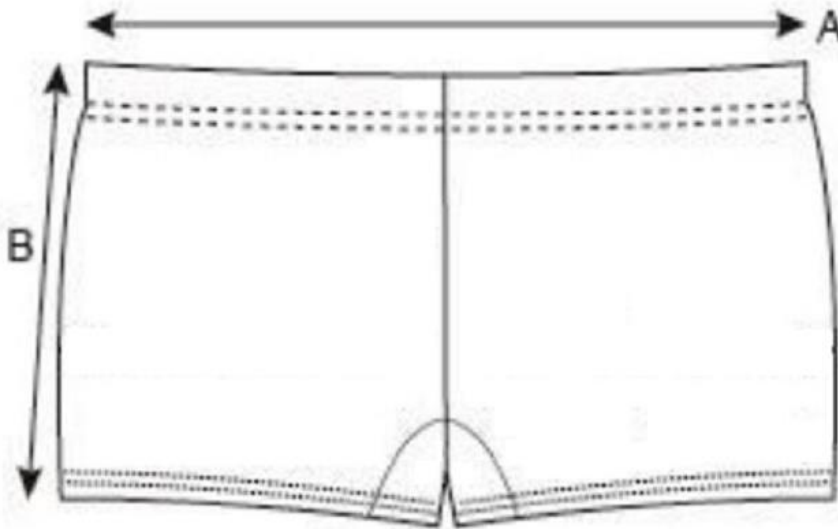
# Boy Leg Shorts

## KIDS SIZING

STANDARD FIT - CM	SIZE	4	6	8	10	12	14
1/2 Waist Relaxed	A	17.5	20.0	22.5	25.0	27.5	30.0
1/2 Waist Stretched	A	19.5	22.0	24.5	27.0	29.5	32.0
Outside Leg	B	22.0	22.5	23.0	23.5	24.5	25.0

## ADULT SIZING

STANDARD FIT - CM	SIZE	8	10	12	14	16	18	20	22	24
1/2 Waist Relaxed	A	32.5	35.0	37.5	40.0	42.5	45.0	47.5	50.0	52.5
1/2 Waist Stretched	A	34.5	37.0	39.5	42.0	44.5	47.0	49.5	52.0	54.5
Outside Leg	B	26.0	26.5	27.0	28.0	28.5	29.5	30.0	30.5	33.0



# Playing Shorts

## KIDS SIZING

STANDARD FIT - CM	SIZE	4	6	8	10	12	14
1/2 Waist Relaxed	A	27.0	27.5	28.5	29.5	30.5	31.5
1/2 Waist Stretched	A	33.0	34.5	36.0	38.0	40.0	42.0
Outside Leg	C	24.0	25.0	27.0	29.0	31.0	33.0

## ADULT SIZING

STANDARD FIT - CM	SIZE	8	10	12	14	16	18	20	22	24
1/2 Waist Relaxed	A	32.5	35.0	37.5	40.0	42.5	45.0	47.5	50.0	52.5
1/2 Waist Stretched	A	43.5	46.0	48.5	51.0	53.5	56.0	58.5	61.0	63.5
Outside Leg	C	35.0	36.0	37.0	38.0	39.0	40.0	41.0	42.0	43.0





# Training Top

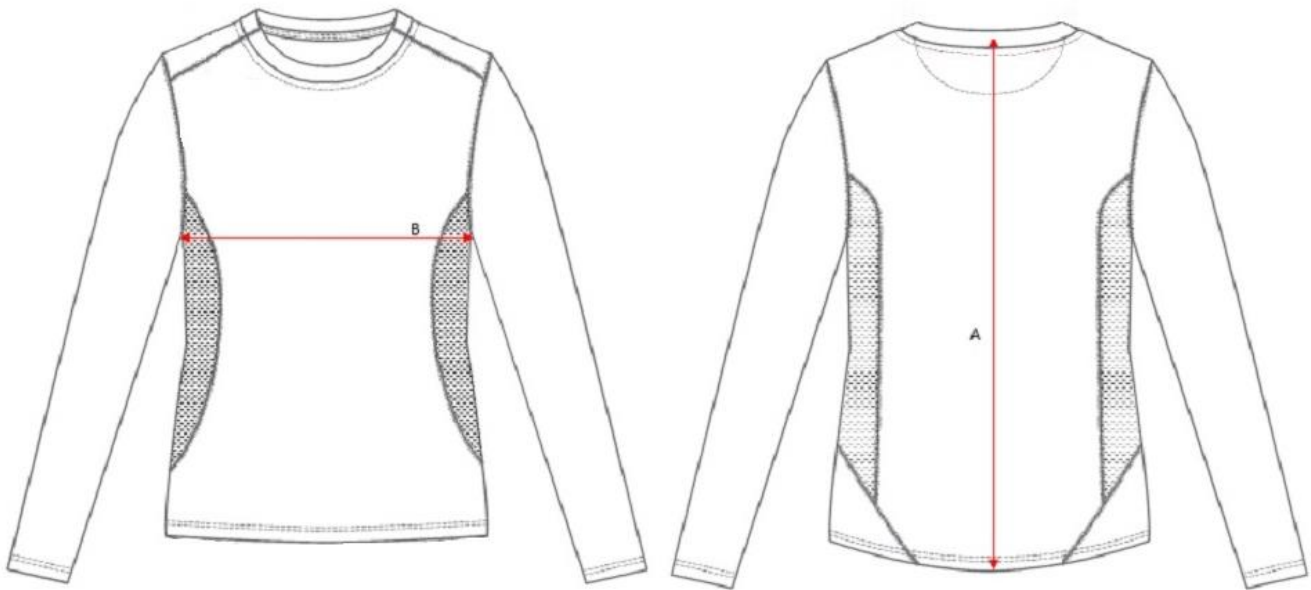
- Short Sleeve or Long Sleeve options
- Optional Name (No Charge)

## KIDS SIZING

STANDARD FIT - CM	SIZE	4	6	8	10	12	14
Centre Back Length	A	41.0	45.0	49.0	53.0	57.0	61.0
1/2 Chest Circumference	B	33.5	35.5	37.5	39.5	41.5	44.5

## ADULT SIZING

STANDARD FIT - CM	SIZE	8	10	12	14	16	18	20	22	24
Centre Back Length	A	66.5	68.0	69.5	71.0	72.5	74.0	75.5	77.0	78.5
1/2 Chest Circumference	B	45.0	47.5	50.0	52.5	55.0	57.5	60.0	62.5	65.0



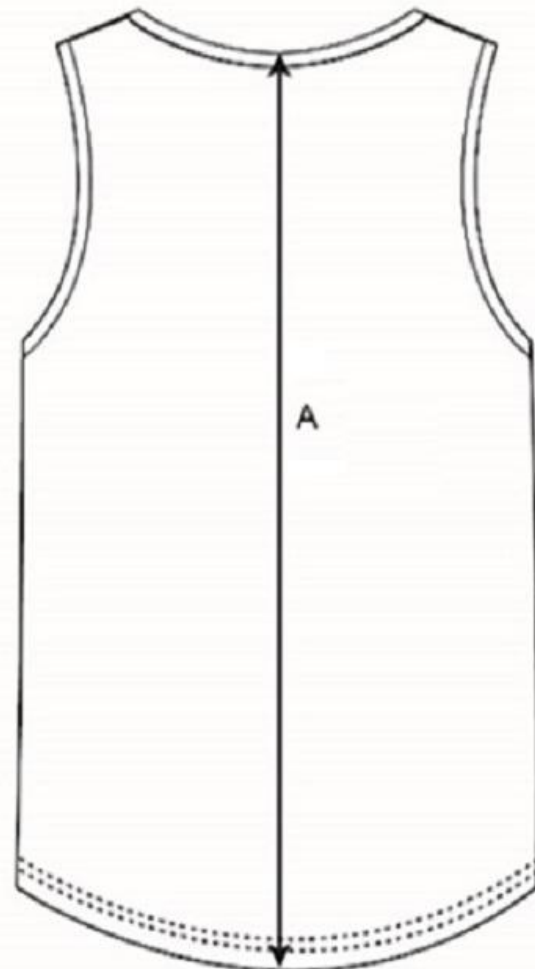
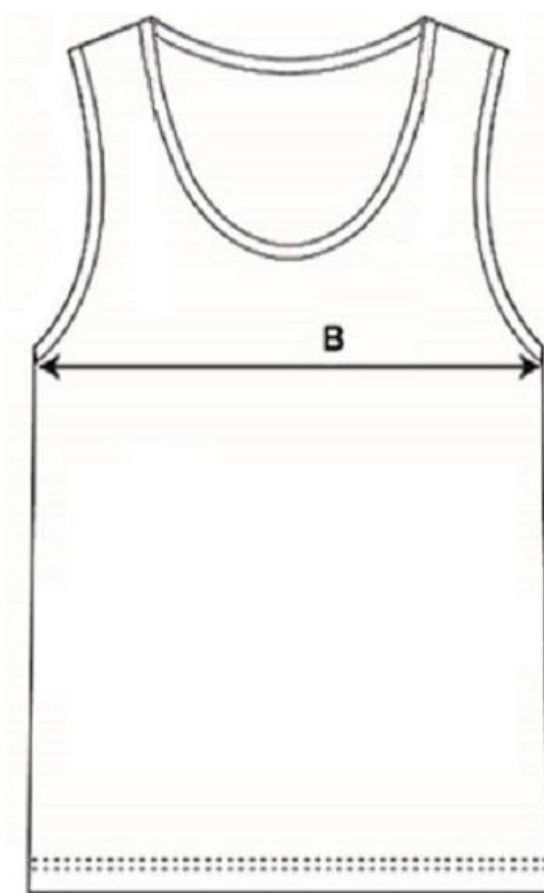
# Training Singlet

## KIDS SIZING

STANDARD FIT - CM	SIZE	4	6	8	10	12	14
Centre Back Length	A	45.5	50.0	54.5	59.0	62.0	65.0
1/2 Chest Circumference	B	33.0	35.0	37.0	39.0	40.5	42.0

## ADULT SIZING

STANDARD FIT - CM	SIZE	8	10	12	14	16	18	20	22	24
Centre Back Length	A	67.0	68.5	70.0	71.5	73.0	74.5	75.5	75.5	75.5
1/2 Chest Circumference	B	43.5	46.0	48.5	51.0	53.5	56.0	58.5	61.0	63.5



# Elite Singlet

## KIDS SIZING

### SLIM FIT - CM

	SIZE	4	6	8	10	12	14
CENTRE BACK LENGTH	<b>A</b>	40.5	44.5	48.5	52.5	56.5	60.5
1/2 CHEST CIRCUMFERENCE	<b>B</b>	32	34	36	38	40	43

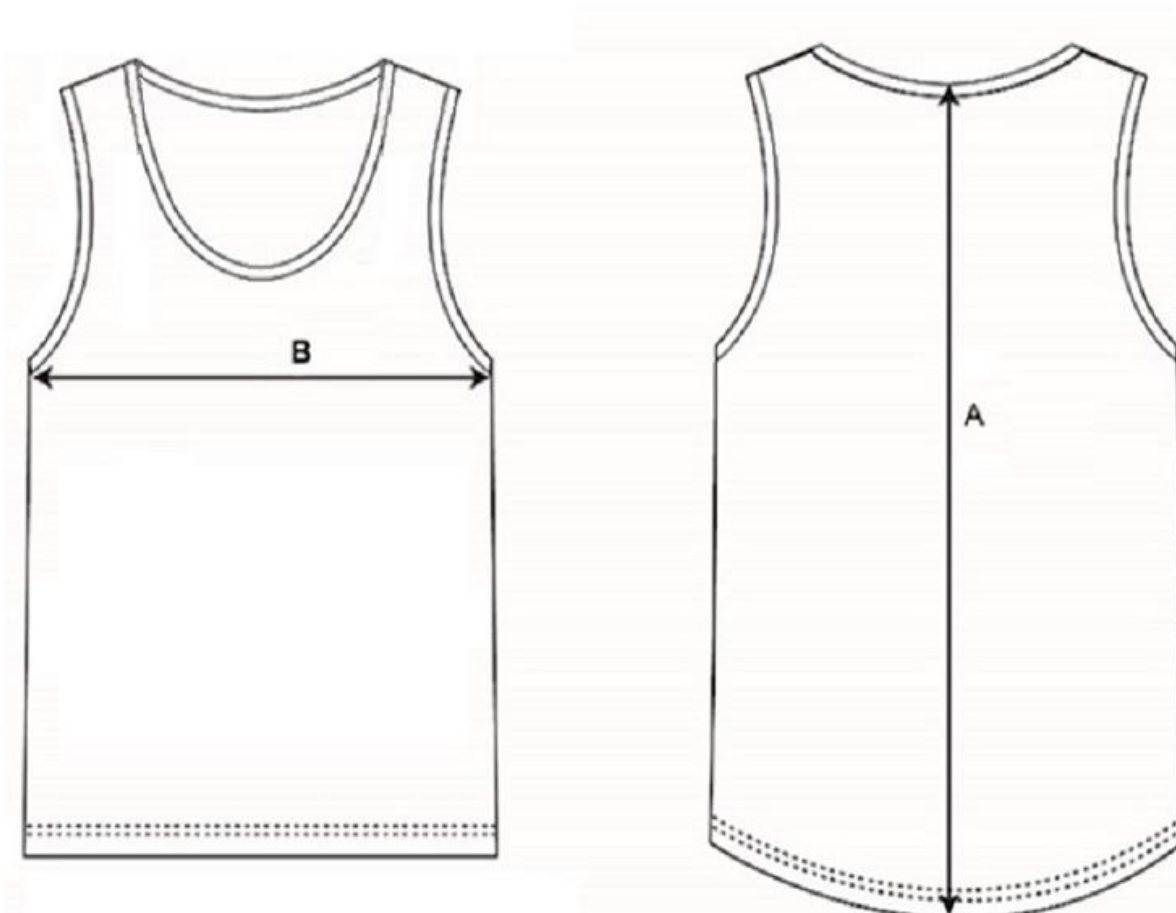
Speed Back



## ADULT SIZING

### SLIM FIT - CM

	SIZE	8	10	12	14	16	18	20	22	24
CENTRE BACK LENGTH	<b>A</b>	63	64.5	66	67.5	69	70.5	72	73.5	75
1/2 CHEST CIRCUMFERENCE	<b>B</b>	43.5	46	48.5	51	53.5	56	58.5	61	63.5





## Ladies Shorts – Short Length

	4	6	8	10	12	14	16	18	20	22	24
1/2 Waist Relaxed	29	31.5	34	36.5	39	41.5	44	46.5	49	51.5	54
1/2 Waist stretched	39	41.5	44	46.5	49	51.5	54	56.5	59	61.5	64
Inseam	8	8	8	8	8	8	8	8	8	8	8



## Ladies Shorts – Mid-Length

	4	6	8	10	12	14	XS	S	M	L	XL	2XL	3XL	4XL	5XL
1/2 Waist Relaxed	26.5	27.5	28.5	29.5	30.5	31.5	33	35.5	38	40.5	43	45.5	48	50.5	53
1/2 Waist stretched	36	38	41	44	47	50	51	53.5	56	58.5	61	63.5	66	68.5	71
length	25	27	29.5	31.5	34	36	36	37	38	39	40	41	42	43	44



# Hoodie

- Optional Name (+ \$15)

## KIDS SIZING

STANDARD FIT - CM	4	6	8	10	12	14	16
1/2 Chest	36.0	39.0	42.0	45.0	48.0	51.0	54.0

## ADULT SIZING

STANDARD FIT - CM	XS	S	M	L	XL	2XL	3XL	5XL
1/2 Chest	54.0	57.0	60.0	63.0	66.0	70.0	74.0	82.0

# Jumper

- Optional Name (+ \$15)

## KIDS SIZING

STANDARD FIT CM	6	8	10	12	14	16
Half Chest	45.0	47.5	50.0	52.5	55.0	57.5

## ADULT SIZING

STANDARD FIT CM	XS	S	M	L	XL	2XL	3XL	4XL	5XL
Half Chest	58.5	60.5	62.5	64.5	66.5	68.5	78.5	72.5	74.5

# Heavy Jacket

## KIDS SIZING

STANDARD FIT - CM	SIZE	4	6	8	10	12	14
Back length from Shoulder	A	47.0	51.0	55.0	59.0	63.0	67.0
1/2 Chest	B	38.5	40.5	42.5	44.5	47.5	50.5
1/2 Hem	C	38.0	40.0	42.0	45.0	48.0	51.0

## ADULT SIZING

STANDARD FIT - CM	SIZE	XS	S	M	L	XL	2XL	3XL	4XL	5XL
Back length from Shoulder	A	68.8	71.5	74.3	76.5	78.8	81.0	83.3	83.3	83.3
1/2 Chest	B	53.0	55.5	58.0	60.5	63.0	65.5	68.0	70.5	73.0
1/2 Hem	C	52.0	54.5	57.0	59.5	62.0	64.5	67.0	69.5	72.0

### FRONT



### BACK



# Polo Top

- Optional Name (No Charge)

## KIDS SIZING

STANDARD FIT - CM	SIZE	4	6	8	10	12	14
BACK LENGTH	<b>A</b>	39	43	47	51	55	59
1/2 CHEST CIRCUMFERENCE	<b>B</b>	35.5	37.5	39.5	41.5	43.5	46.5
1/2 HEM CIRCUMFERENCE	<b>C</b>	35.5	37.5	39.5	41.5	43.5	46.5

## ADULT SIZING

STANDARD FIT - CM	SIZE	8	10	12	14	16	18	20	22	24
BACK LENGTH	<b>A</b>	64.5	66	67.5	69	70.5	72	73.5	75	76.5
1/2 CHEST CIRCUMFERENCE	<b>B</b>	48.5	51	53.5	56	58.5	61	63.5	66	68.5
1/2 HEM CIRCUMFERENCE	<b>C</b>	48.5	51	53.5	56	58.5	61	63.5	66	68.5

### FRONT



### BACK





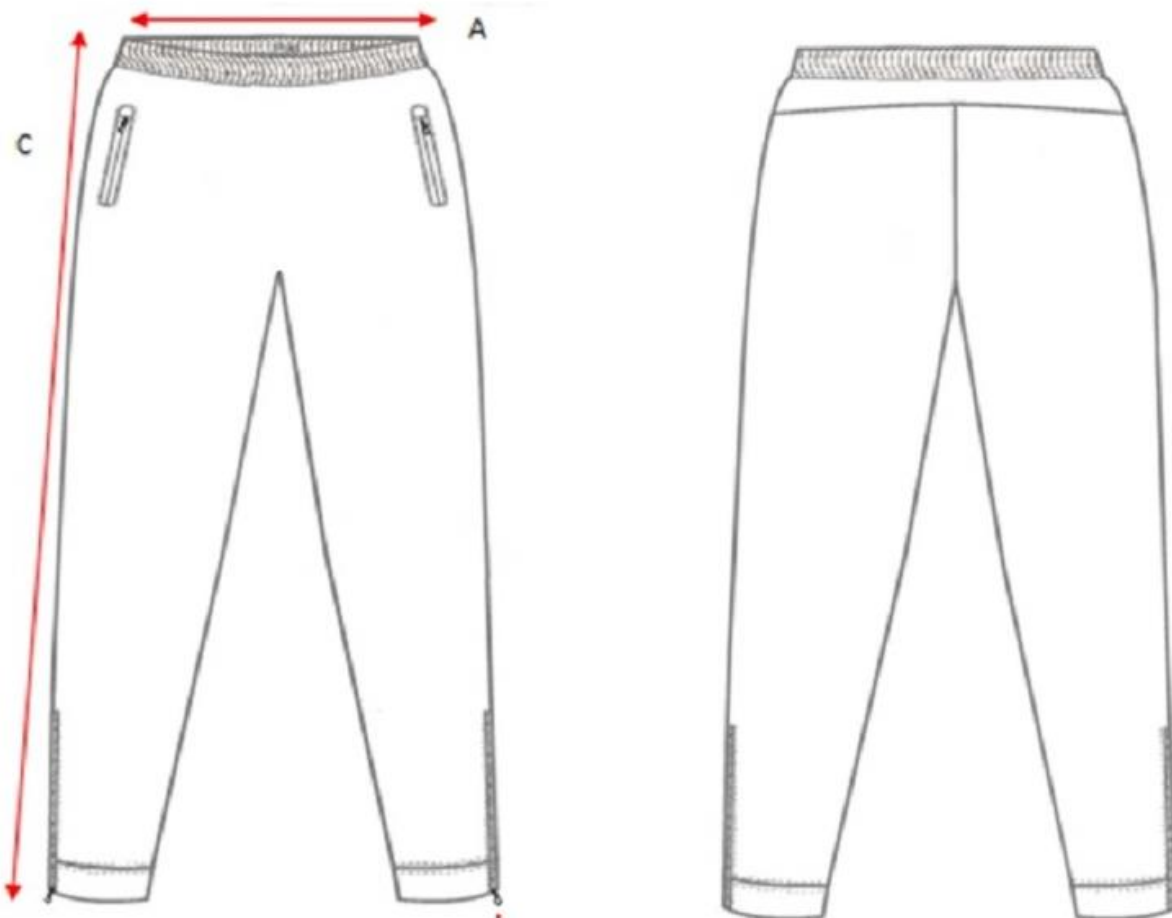
# Tracksuit Pants

## KIDS SIZING

STANDARD FIT - CM	SIZE	4	6	8	10	12	14
1/2 Waist Relaxed	A	30.5	31.5	32.5	33.5	34.5	35.5
1/2 Waist Stretched	B	32.5	34.5	36.5	38.5	40.5	42.5
Outside Leg	C	61.0	69.0	78.0	86.0	93.0	98.0

## ADULT SIZING

STANDARD FIT - CM	SIZE	8	10	12	14	16	18	20	22	24
1/2 Waist Relaxed	A	33.5	35.0	36.5	39.0	41.5	44.0	46.5	49.0	51.5
1/2 Waist Stretched	A	40.5	43.0	45.5	48.0	50.5	53.0	55.5	58.0	60.5
Outside Leg	C	98.5	99.5	100.5	101.5	102.5	103.5	104.5	105.5	106.5





# Puffer Vests

## LADIES

### ADULT SIZING

STANDARD FIT - CM	SIZE	8	10	12	14	16	18	20	22	24
Centre Back Length	A	52.5	54.5	57.0	59.5	62.0	64.5	67.0	69.5	72.0
Chest	B	61.5	63.5	65.5	67.5	69.5	71.5	73.5	75.5	77.5

## MENS

### ADULT SIZING

STANDARD FIT - CM	SIZE	2XS	XS	S	M	L	XL	2XL	3XL	4XL	5XL
Centre Back Length	A	55.0	57.5	60.0	62.5	65.0	67.5	70.0	72.5	75.0	77.5
Chest	B	68.5	70.0	71.5	73.0	74.5	76.0	77.5	79.0	80.5	82.0

# Leggings

### ADULT SIZING

STANDARD FIT - CM	XXS	XS	S	M	L	XL	2XL
1/2 Waist Stretched	37.0	40.0	44.0	48.0	52.0	55.5	63.5
1/2 Waist Relaxed	28.0	30.5	33.5	36.5	39.5	42.5	48.5

# Umpire Jacket

## KIDS SIZING

STANDARD FIT - CM	SIZE	4	6	8	10	12	14
Back length from Shoulder		47.0	51.0	55.0	59.0	63.0	67.0
1/2 Chest		38.5	40.5	42.5	44.5	47.5	50.5
1/2 Hem		38.0	40.0	42.0	45.0	48.0	51.0

## ADULT SIZING

STANDARD FIT - CM	SIZE	XS	S	M	L	XL	2XL	3XL	4XL	5XL
Back length from Shoulder		68.8	71.5	74.3	76.5	78.8	81.0	83.3	83.3	83.3
1/2 Chest		53.0	55.5	58.0	60.5	63.0	65.5	68.0	70.5	73.0
1/2 Hem		52.0	54.5	57.0	59.5	62.0	64.5	67.0	69.5	72.0

### FRONT



### BACK



# Umpire Polo – LADIES

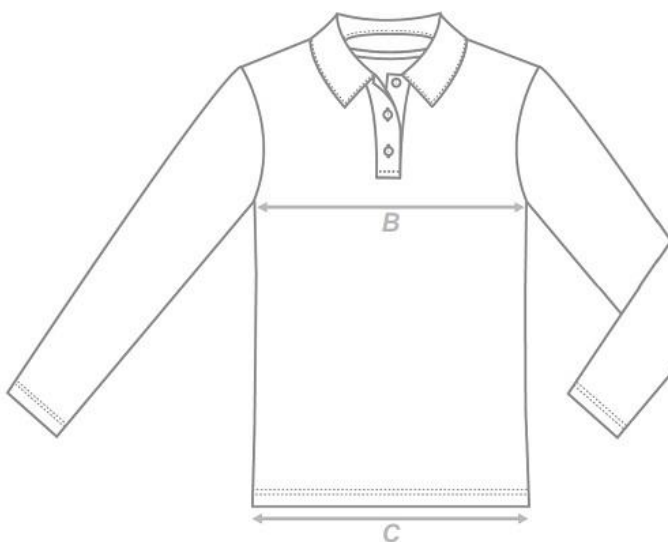
## KIDS SIZING

STANDARD FIT - CM	SIZE	4	6	8	10	12	14
BACK LENGTH	<b>A</b>	39	43	47	51	55	59
1/2 CHEST CIRCUMFERENCE	<b>B</b>	35.5	37.5	39.5	41.5	43.5	46.5
1/2 HEM CIRCUMFERENCE	<b>C</b>	35.5	37.5	39.5	41.5	43.5	46.5

## ADULT SIZING

STANDARD FIT - CM	SIZE	8	10	12	14	16	18	20	22	24
BACK LENGTH	<b>A</b>	64.5	66	67.5	69	70.5	72	73.5	75	76.5
1/2 CHEST CIRCUMFERENCE	<b>B</b>	48.5	51	53.5	56	58.5	61	63.5	66	68.5
1/2 HEM CIRCUMFERENCE	<b>C</b>	48.5	51	53.5	56	58.5	61	63.5	66	68.5

**FRONT**



**BACK**



# Umpire Polo – MEN'S

## KIDS SIZING

STANDARD FIT - CM	SIZE	4	6	8	10	12	14
BACK LENGTH	<b>A</b>	45	47	51	55	59	63
1/2 CHEST CIRCUMFERENCE	<b>B</b>	36	38	40	42	44	47
1/2 HEM CIRCUMFERENCE	<b>C</b>	36	38	40	42	44	47

## ADULT SIZING

STANDARD FIT - CM	SIZE	XS	S	M	L	XL	2XL	3XL	4XL	5XL
BACK LENGTH	<b>A</b>	70.5	72	73.5	75	76.5	78	79.5	81	82.5
1/2 CHEST CIRCUMFERENCE	<b>B</b>	50	52.5	55	57.5	60	62.5	65	67.5	70
1/2 HEM CIRCUMFERENCE	<b>C</b>	50	52.5	55	57.5	60	62.5	65	67.5	70

